

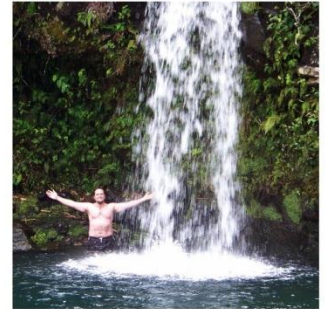
THE ROAD TO HANA

The road to Hana is without question the most famous & desired drive in all Hawaii, the crown jewel of driving... a slow, winding road through a lush paradise. The drive alone takes nearly 6 hours, without stopping. For a one-day tour, which we did, we could only see one third of what there was to see.

Mostly narrow, two lanes with lots of one-way bridges (a lot are 100 yrs old). The road is never straight & believed to have over 600 turns. After the 39-mile marker the road went from pavement to gravel. After a few miles, went back to pavement but had terrible patch jobs.



3 Bears Falls



Pua's Fa's State Park



taken from the road



Wai'anapanapa Black Sand Beach



Red Sand Beach



After we reached Hana, we did not turn around - we kept going. We experienced the windswept back of Haleakala in late afternoon. - the sunlight casted deep shadows in the gulches. There was utter lack of civilized development. We went from lushness to the land of sun & wind; hard to believe that the backside is part of the same mountain.