

# VISITING THE BIG ISLAND, HAWAII



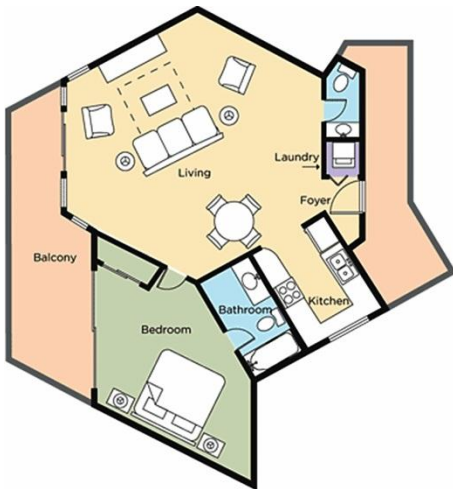
We flew to the Big Island in a very small, 9-passenger airplane. I did not know how small the plane would be and I was scared.

Jason's expression says it all...



I was confused at first that the biggest island is called Hawaii but all the islands are considered part of the state of Hawaii. To make things more complicated, the capital of Hawaii isn't on this island – it's Honolulu, which is on O'ahu - and - this island doesn't have the most population. O'ahu has 80% of the population. ALL of the islands can fit into the area of the Big Island. We had a lot more ground to cover!

We stayed in the main town on the west side called Kailua-Kona, also known as Kona, Kailua or sometimes Kailua Town. In the old days it was simply Kailua. The name of the resort was Wyndham Mauna Loa Village.





**Driving Times from Kona Int'l Airport (KOA) to:**

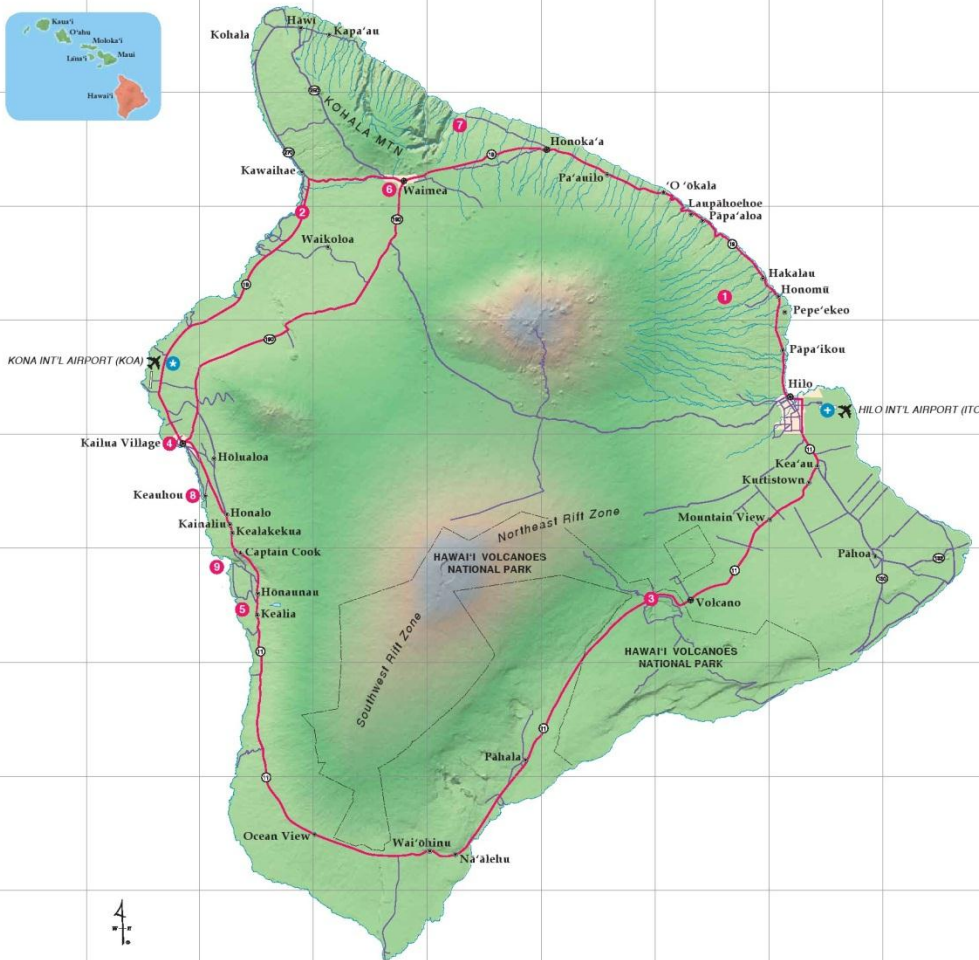
- 1 Akaka Falls State Park: 2 hours, 10 minutes
- 2 Hāpuna Beach Park: 30 minutes
- 3 Hawai'i Volcanoes National Park: 3 hours, 15 minutes
- 4 Historic Kailua Village (Kailua-Kona): 15 minutes
- 5 Pu'uhonua o Hōnaunau National Historical Park: 1 hour
- 6 Waimea: 45 minutes
- 7 Waip'ō Valley: 1 hour, 30 minutes
- 8 Keauhou: 25 minutes
- 9 Kealahou Bay: 45 minutes

\*Drive times may vary due to traffic conditions

**Driving Times from Hilo Int'l Airport (ITO) to:**

- 1 Akaka Falls State Park: 30 minutes
- 2 Hāpuna Beach Park: 1 hour, 45 minutes
- 3 Hawai'i Volcanoes National Park: 45 minutes
- 4 Historic Kailua Village (Kailua-Kona): 2 hours, 30 minutes
- 5 Pu'uhonua o Hōnaunau National Historical Park: 3 hours
- 6 Waimea: 1 hour, 30 minutes
- 7 Waip'ō Valley: 1 hour, 30 minutes

\*Drive times may vary due to traffic conditions



© 2010 Hawai'i Visitors and Convention Bureau



We made several trips to cover all of the island (definitely needed much more time or needed to stay at different locations). One main goal was to visit Volcano National Park. There was not a way to travel directly from where we were staying, across diagonally ...so it was a long trip there and unfortunately not enough time to visit other places the same day, such as the Black Sand Beach nearby the park. We had seen a black sand beach on Maui, but I would have liked to have taken a nice photo on the Big Island of some black sand. Now that's a good reason to go back.

Starting at the airport, we noticed so much black lava deposits everywhere.

People used little white pebbles to draw signs & write things...



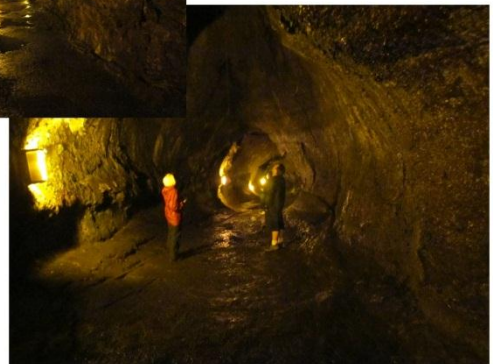


There was volcanic activity going on when we visited here in November 2012. It was exciting to visit and to see the steam coming up from cracks on the ground's floor of already hardened lava from a previous time.





Lava tubes are natural conduits through which lava travels beneath the surface of a lava flow, expelled by a volcano during an eruption. Jason, Maki & Rick decided to check one out...



One would think this area would not be pretty with all the black lava – but as shown above, it was beautiful. We traveled through some rain forests and saw pheasants. The eucalyptus plant was growing everywhere and very large trees with fuzzy red blooms.

Eucalyptus Plants (red blooms)



Pheasants in a rain forest

I was looking forward to seeing waterfalls. My goal was to take a photo of a waterfall with a rainbow background in Hawaii. We visited the Rainbow Falls and Wai'ale Falls in the afternoon (located in upper Piihonua in Hilo Hawaii). If we were lucky to see sun, which we weren't, the sun had to be behind me to get a rainbow and that would have been in the morning.



These are just some of the photos I took and just some of the sites we saw. As stated before, we needed much more time to visit all or most of the areas around the island. Hawaii is a beautiful place to visit and well worth the costs!